



ISSN: 0975-833X

## RESEARCH ARTICLE

### IN SILICO ANALYSIS OF VACCINE TARGET AGAINST MULTIDRUG RESISTANT *STAPHYLOCOCCUS AUREUS*

Shuchi Kaushik <sup>\*,1</sup>, Archana Shrivastav<sup>2</sup>, and Sudhir Kumar Jain<sup>3</sup>

<sup>1,2</sup>Department of Microbiology, College of Life Sciences, Cancer Hospital & Research Institute, Gwalior (M.P.)

<sup>3</sup>Department of Microbiology, Vikram University, Ujjain (M.P.)

#### ARTICLE INFO

##### Article History:

Received 12<sup>th</sup> June, 2012

Received in revised form

19<sup>th</sup> July, 2012

Accepted 10<sup>th</sup> August, 2012

Published online 09<sup>th</sup> September, 2012

##### Key words:

Multidrug Resistance,

*In silico*,

Vaccine.

#### ABSTRACT

*Staphylococcus aureus* (*S. aureus*) is a common bacterium that lives on the skin and in some people's noses. *S. aureus* can cause a range of mild to severe infections. Excessive use of antibiotics has led to drug-resistant strains of *S. aureus* (MRSA). The ancient practice of vaccine designing was being evaluated in the present study for the *in silico* development of preventive measure against multidrug resistant *Staphylococcus aureus* infections. Multiple sequence alignment revealed various conserved regions in *mecA* protein. We predicted one such type of multi-epitope peptide which was having very good potential to induce B cell response and a very good candidate for binding to MHC II molecule. Structure prediction of this sequence by PSIPRED revealed that 22 helix are present in this sequence. The identified peptide can be a suitable target for induction of both T<sub>H</sub> cell and B cell. This peptide was designed from conserved regions of *mecA*, so it can be a preventive measure for MRSA infections after suitable experimental analysis. This data can be very helpful for generating antigenic candidate by wet lab researchers.

Copy Right, IJCR, 2012, Academic Journals. All rights reserved.

#### INTRODUCTION

The genus "*Staphylococcus*" is common inhabitant of the skin and mucous membrane. *Staphylococcus* gets its name from its appearance under the microscope: *staphyle*, the Greek word for a bunch of grapes, combined with *kokkos*, meaning berry. Illness results when staph bacteria are somehow able to overcome the body's natural defense mechanisms. Staph-related sicknesses range from skin infections to food poisoning or toxic shock syndrome, and severity ranges from mild to fatal. Approximately 20–30% of the general population is "staph carriers"<sup>1</sup>. It is still one of the four most common causes of nosocomial infections, often causing post-surgical wound infections. The emergence of antibiotic resistance in this microorganism and their spread is threatening the medical community. The resistance development in *Staphylococcus aureus* dates back to 1940s. Multiple drug resistance of *Staphylococcus aureus* is due to the presence of *mecA* gene coding for penicillin binding protein (PBP2a) with a low affinity for  $\beta$ -lactam antibiotics.

This gene is carried on *Staphylococcal Cassette Chromosome* (SCC) *mec*, a unique mobile genetic element that harbors the methicillin resistant gene (*mecA*) and other antibiotic resistant determinants<sup>2</sup>. Although it's usually treatable, when MRSA enters the bloodstream, the infection is life-threatening. This is why it is important to be aware of how staph infections develop and how to prevent them. Once someone contracts a staph infection, anyone in close contact with them can contract

it from them. No effective vaccine is generally available that stimulates active immunity against staphylococcal infections in humans. However, vaccine therapies represent a new and innovative approach in broadening the available clinical tools against the global health problem of community and healthcare-associated *S. aureus* bacterial infections<sup>3</sup>. So, it is cardinal to focus over *mecA* protein to design a multi-epitope antigenic target specific against multidrug resistant *Staphylococcus* that may provide protection from variety of infections caused by this deadly bacterium. Thus, we investigated the possible vaccine candidate for the test organism using bioinformatics tools.

#### MATERIALS AND METHODS

An effort was made to analyze preventive measure against *Staphylococcus aureus*. So we performed *in silico* prediction of vaccine candidates of *mecA* through bioinformatics approach. In this context, we have done multiple sequence alignment of *mecA* sequences using database. The target which can be suitable for B-cell as well as T-cell epitope prediction is considered to be good<sup>4</sup>. We therefore search for the same and tried to find the possible targets as B-cell epitope by Bepipred method. The T-cell targets were predicted by using EpiJen server<sup>5,6</sup>. Structural prediction was done by PSIPRED.

#### RESULTS AND DISCUSSION

The threat to the human population is that reservoirs of drug-resistant bacteria is abound. Even though pharmaceutical companies have produced a number of new antibacterial drugs

\*Corresponding Author: shuchi.kaushik2@gmail.com

over the years, resistance to these drugs by *Staphylococcus aureus* has increased manifold and has now become a global concern. Beginning in the 1940s, penicillin was produced and used to treat Staph aureus. Alarming, within just ten years, a drug resistant strain emerged. By 1960, methicillin was introduced, but less than twenty years later; Australia reported the first methicillin-resistant strain of staph. Methicillin-resistant *Staphylococcus aureus* (MRSA) was born, and in a few years it had cropped up all over the world<sup>7, 8</sup>. Athletes and prisoners fall into the category of high-risk for contraction of MRSA infections, and so do family members and coworkers. There is a special designation for MRSA contracted by those who have not been in a healthcare-related environment - community-associated MRSA (CA-MRSA). The Centers for Disease Control (CDC) estimates that around 12% of MRSA cases now fall within this category. But the vast majority of MRSA cases appear in healthcare settings<sup>9</sup>. The National Institute for Occupational Safety and Health (NIOSH) reports "5 Cs" that make it easier for the disease to be transmitted: Crowding, frequent skin-to-skin Contact, Compromised skin, contaminated items and surfaces, and lack of Cleanliness<sup>10</sup>. The CDC states that it's critical to maintain a clean environment "by establishing cleaning procedures for frequently touched surfaces and surfaces that come into direct contact with people's skin."

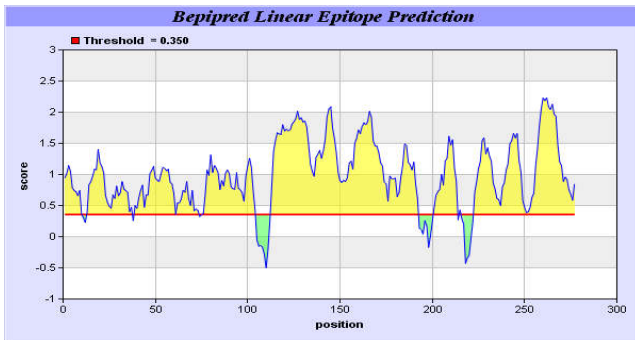


Figure1. Predicted B-cell epitope by BepiPred Epitope prediction method

In the present study, it was found that *mecA* protein of *Staphylococcus* can be used as an effective candidate for the development of preventive measures against drastic diseases by blocking its resistance efficiency. In fact *in silico* approach of vaccine target prediction is definitely less labor intensive, rapid and economic in relation to search for a lead antigenic molecule against *mecA* protein<sup>11</sup>. Multiple sequence alignment revealed various conserved regions of this protein. Analysis was done for finding out the potential of these conserved regions to work as B cell epitope and we found 41 potential B cell epitopes among the conserved sequence. For any predicted epitope, it is cardinal that it should induce T and B cell response<sup>12</sup>. Such type of multi-epitope vaccine is a very recent experimental technique for predicting vaccine targets against HIV and Influenza virus<sup>13</sup>. We predicted one such type of multi-epitope peptide which was having very good potential to induce B cell response as well as a very good candidate for binding to MHC II molecule as found by Kohler (2000)<sup>14</sup> also in his study. (Fig. 1) Among 51 MHC II alleles analyzed, the conserved region of protein *mecA* showed binding affinity with all the 51 alleles with one or more than one paratope found in each. As per the results of ProPred, 47 sequences were found to bind with MHC I alleles. During the last step of study, this

protein sequence was also analyzed for its binding affinity with T-cell receptors using the EpiJen server<sup>15</sup>. Structure prediction of this sequence by PSIPRED revealed that 22 helix are present in this sequence (Fig. 2). This data can be very helpful for generating antigenic candidate by wet lab researchers.

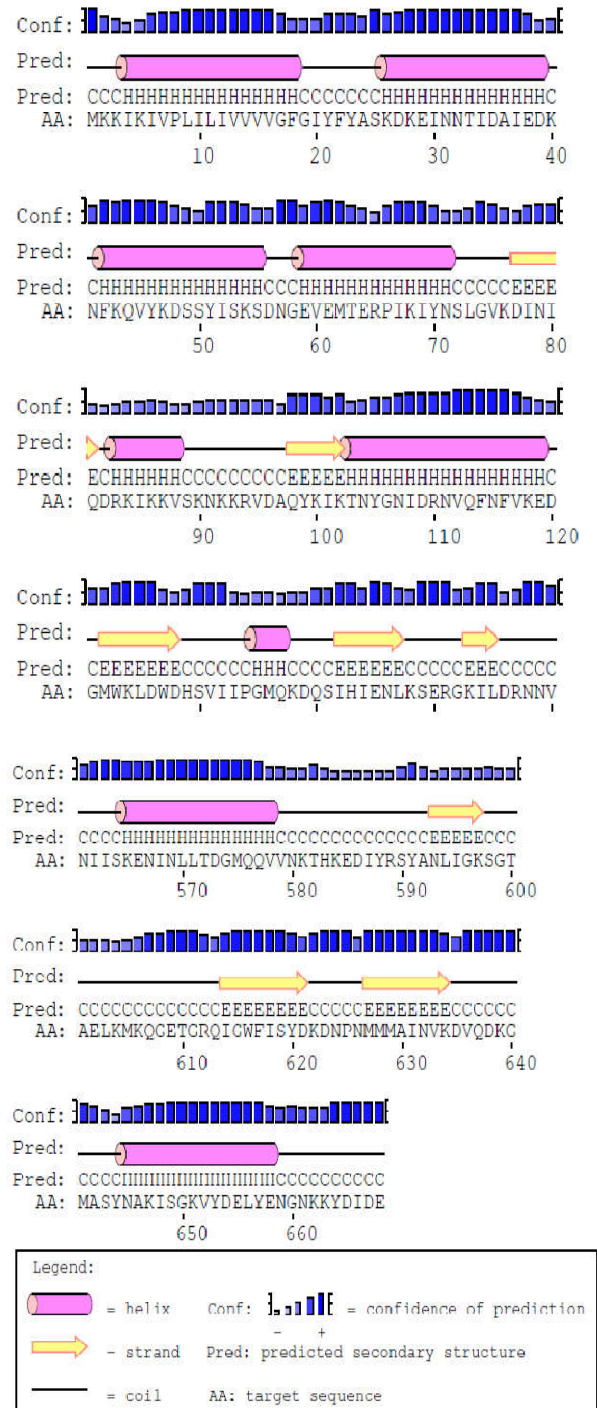


Figure 2. A part of the structure of proposed vaccine target against MRSA predicted by PSIPRED

**Conclusion**

The most important, all-encompassing matter in preventing staph infections like MRSA is cleanliness. The results presented in this report were encouraging, although clinical controlled

studies are required to define the real efficacy and possible toxic effects *in vivo*. Also the focus of this study was on a bioinformatics based approach as a means to enhance the optimal selection of potential target of immune response that can then be validated by experiment that test the biological function of these antigen sequences in immune system based assays.

## REFERENCES

- Abele, R. and Tampe', R. 2004. The ABCs of immunology: structure and function of TAP, the transporter associated with antigen processing. *Physiology*, 19: 216–224.
- Agrawal, R.,T. Imielinski, and A. Swami. 1993. *IEEE Transactions on Knowledge and Data Engineering*, 5, 6.
- Bhasin, M. and Raghava, G.P. 2007. A hybrid approach for predicting promiscuous MHC class I restricted T cell epitopes. *J. Biosci.*, 32: 31–42.
- Borgelt, C. and R. Kruse. in 15th Conference on Computational Statistics. 2002. Berlin, Germany.
- Gerberding, JL 1998. Nosocomial transmission of opportunistic infections. *Infect Control Hosp Epidemiol.*, 19: 574-7.
- Heyman, D. 2004. *Control of Communicable Diseases Manual 18th Edition*. Washington DC: American Public Health Association.
- Kohler, B. *et al.*, 2000. A systematic approach to vaccine complexity using an automaton model of the cellular and humoral immune system. *Vaccine*, 19: 862–876.
- Kuby, J. 1997. Major Histocompatibility Complex, chapter 9 *In: Immunology*, 3<sup>rd</sup> ed., 231-235, W. H. Freeman & Company, New York.
- Milledge, T., G. Zheng, and G. Narasimhan. 2005. Proceedings of the Annual International Conference on Computational Molecular Biology, RECOMB: Submitted 10/04.
- Ndawula, EM, Brown, L. 1991. Mattresses as reservoirs of epidemic methicillin-resistant *Staphylococcus aureus* [Letter]. *Lancet.*, 337: 488.
- Nielsen, M. *et al.* 2007. Prediction of MHC class II binding affinity using SMM-align, a novel stabilization matrix alignment method. *BMC Bioinformatics*, 8: 238.
- O'Donoghue, MA, Allen, KD. 1992. Costs of an outbreak of wound infections in an orthopaedic ward. *J Hosp Infect.*, 22: 73-9.
- Rello, J, Quintana, E, Ausina, V, Puzo, V, Puzo, C, Net, A, Prats, G. 1990. Risk factors for *Staphylococcus aureus* nosocomial pneumonia in critically ill patients. *Am Rev Respir Dis.*, 142: 1320-4.
- Singh, H. and G.P.S. Raghava. 2003. *Bioinformatics*, 19, 8.
- Zhang, K., McClure J., Elsayed S., Louie T. and Conly J. M. 2005. Novel multiplex PCR Assay for characterization and concomitant subtyping of staphylococcal cassette chromosome *mec* types I to V in methicillin resistant *Staphylococcus aureus*. *J Clin Microbiol.*, 43: 5026-5033.

\*\*\*\*\*